

The WOOL HOUSE



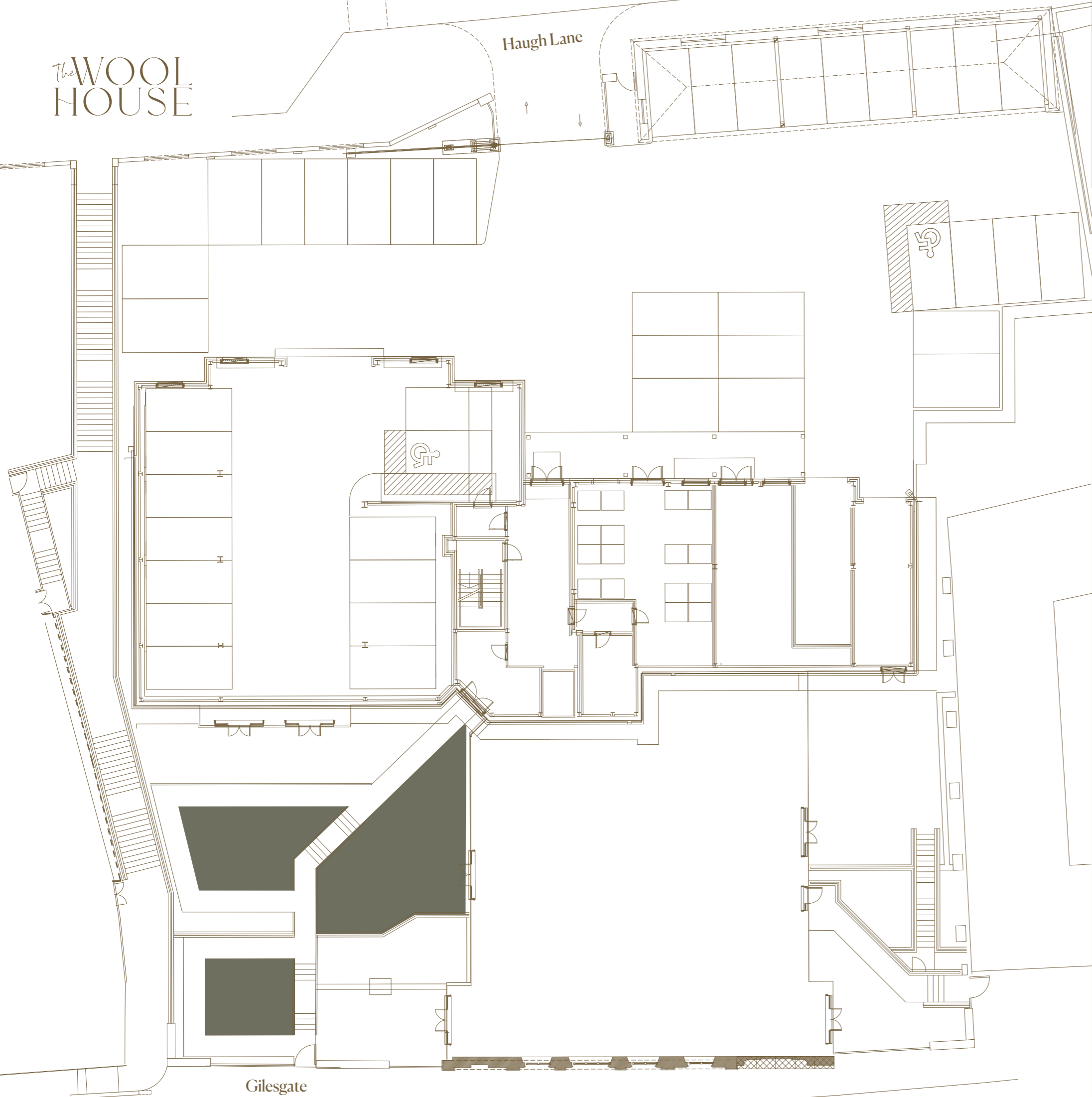
thewoolhouse.co.uk

The Wool House, Gilesgate,
Hexham NE46 3BT

01434 608 980

FLOOR 0

44 car parking spaces



Floor plans: Floor plans are intended to give a general indication of the proposed floor layout only. The dimensions are accurate to within + or - 50mm. Dimensions should not be used for carpet or flooring sizes, appliance spaces or items of furniture. Please ask our sales adviser for details about the treatments specified for individual plots. Drainage, heating and electrical layouts may vary. Dimensions are not intended to form part of any contract or warranty unless specifically incorporated in writing into the contract.

The WOOL HOUSE



youngsRPS 
CHARTERED SURVEYORS & PROPERTY CONSULTANTS

thewoolhouse.co.uk

The Wool House, Gilesgate,
Hexham NE46 3BT

01434 608 980

FLOOR 1





APARTMENT 1

1 Bedroom | Juliet Balcony
75.7 m² | 814.8 ft²

APARTMENT 2

1 Bedroom
54.1 m² | 582 ft²

APARTMENT 3

1 Bedroom | Juliet Balcony
47.6 m² | 512 ft²

APARTMENT 4

1 Bedroom | Terrace
70.8 m² | 762 ft²

APARTMENT 5

2 Bedrooms | Juliet Balcony | Terrace
100.6 m² | 1082.8 ft²

Floor plans: Floor plans are intended to give a general indication of the proposed floor layout only. The dimensions are accurate to within + or - 50mm. Dimensions should not be used for carpet or flooring sizes, appliance spaces or items of furniture. Please ask our sales adviser for details about the treatments specified for individual plots. Drainage, heating and electrical layouts may vary. Dimensions are not intended to form part of any contract or warranty unless specifically incorporated in writing into the contract.

-  Communal areas
-  Utilities

The WOOL HOUSE



thewoolhouse.co.uk

The Wool House, Gilesgate,
Hexham NE46 3BT

01434 608 980

FLOOR 2



Floor plans: Floor plans are intended to give a general indication of the proposed floor layout only. The dimensions are accurate to within + or - 50mm. Dimensions should not be used for carpet or flooring sizes, appliance spaces or items of furniture. Please ask our sales adviser for details about the treatments specified for individual plots. Drainage, heating and electrical layouts may vary. Dimensions are not intended to form part of any contract or warranty unless specifically incorporated in writing into the contract.

-  Communal areas
-  Utilities

APARTMENT 6

2 Bedrooms | Juliet Balcony
76.5 m²sq | 823.4 ft²sq

APARTMENT 7

2 Bedrooms | Juliet Balcony
76.5 m²sq | 823.4 ft²sq

APARTMENT 8

2 Bedrooms | Juliet Balcony
78.5 m²sq | 844.9 ft²sq

APARTMENT 9

2 Bedrooms | x2 Juliet Balconies | Patio
95.1 m²sq | 1023.6 ft²sq

The WOOL HOUSE



FLOOR 3



Floor plans: Floor plans are intended to give a general indication of the proposed floor layout only. The dimensions are accurate to within + or - 50mm. Dimensions should not be used for carpet or flooring sizes, appliance spaces or items of furniture. Please ask our sales adviser for details about the treatments specified for individual plots. Drainage, heating and electrical layouts may vary. Dimensions are not intended to form part of any contract or warranty unless specifically incorporated in writing into the contract.

-  Communal areas
-  Utilities

APARTMENT 10
2 Bedrooms | Juliet Balcony | 76.6 m²sq | 824.5 ft²sq

APARTMENT 11
2 Bedrooms | Juliet Balcony | 76.6 m²sq | 824.5 ft²sq

APARTMENT 12a
2 Bedrooms | Juliet Balcony | 84.5 m²sq | 909.5 ft²sq

APARTMENT 12b
2 Bedrooms | Juliet Balcony | 94 m²sq | 1011.8 ft²sq

APARTMENT 14
2 Bedrooms | Juliet Balcony | 92.8 m²sq | 998.8 ft²sq

APARTMENT 15
2 Bedrooms | Juliet Balcony | 95.1 m²sq | 1023.6 ft²sq

APARTMENT 16
2 Bedrooms | Juliet Balcony | 92.2 m²sq | 992.4 ft²sq

APARTMENT 17
2 Bedrooms | Juliet Balcony | 77.3 m²sq | 832 ft²sq

APARTMENT 18
2 Bedrooms | Patio | 68.5 m²sq | 737.3 ft²sq

APARTMENT 19
2 Bedrooms | Patio | 75.5 m²sq | 812.6 ft²sq

The WOOL HOUSE



youngsRPS 
CHARTERED SURVEYORS & PROPERTY CONSULTANTS

thewoolhouse.co.uk

The Wool House, Gilesgate,
Hexham NE46 3BT

01434 608 980

FLOOR 4



Floor plans: Floor plans are intended to give a general indication of the proposed floor layout only. The dimensions are accurate to within + or - 50mm. Dimensions should not be used for carpet or flooring sizes, appliance spaces or items of furniture. Please ask our sales adviser for details about the treatments specified for individual plots. Drainage, heating and electrical layouts may vary. Dimensions are not intended to form part of any contract or warranty unless specifically incorporated in writing into the contract.

-  Communal areas
-  Utilities

APARTMENT 20

2 Bedrooms | Juliet Balcony | 75.5 m²sq | 812.6 ft²sq

APARTMENT 21

2 Bedrooms | Juliet Balcony | 75.5 m²sq | 812.6 ft²sq

APARTMENT 22

2 Bedrooms | Juliet Balcony | 84.5 m²sq | 909.5 ft²sq

APARTMENT 23

2 Bedrooms | Juliet Balcony | 95 m²sq | 1022.5 ft²sq

APARTMENT 24

2 Bedrooms | Juliet Balcony | 92.8 m²sq | 998.8 ft²sq

APARTMENT 25

2 Bedrooms | Juliet Balcony | 91.5 m²sq | 1023.6 ft²sq

APARTMENT 26

2 Bedrooms | Juliet Balcony | 92.2 m²sq | 992.4 ft²sq

APARTMENT 27

2 Bedrooms | Juliet Balcony | 77.3 m²sq | 832 ft²sq

APARTMENT 28 LOWER FLOOR

2 Bedrooms | Juliet Balcony | Duplex
131.6 m²sq | 1416.5 ft²sq

APARTMENT 29 LOWER FLOOR

2 Bedrooms | Juliet Balcony | Duplex
126.3 m²sq | 1359.4 ft²sq

The WOOL HOUSE



youngsRPS 
CHARTERED SURVEYORS & PROPERTY CONSULTANTS

thewoolhouse.co.uk

The Wool House, Gilesgate,
Hexham NE46 3BT

01434 608 980

FLOOR 5



Floor plans: Floor plans are intended to give a general indication of the proposed floor layout only. The dimensions are accurate to within + or - 50mm. Dimensions should not be used for carpet or flooring sizes, appliance spaces or items of furniture. Please ask our sales adviser for details about the treatments specified for individual plots. Drainage, heating and electrical layouts may vary. Dimensions are not intended to form part of any contract or warranty unless specifically incorporated in writing into the contract.

-  Communal areas
-  Utilities

APARTMENT 30

2 Bedrooms | Juliet Balcony | 75.5 m²sq | 812.6 ft²sq

APARTMENT 31

2 Bedrooms | Juliet Balcony | 75.5 m²sq | 812.6 ft²sq

APARTMENT 32

2 Bedrooms | Juliet Balcony | 84.5 m²sq | 909.5 ft²sq

APARTMENT 33

2 Bedrooms | Juliet Balcony | 95 m²sq | 1022.5 ft²sq

APARTMENT 34

2 Bedrooms | Juliet Balcony | 92.8 m²sq | 998.8 ft²sq

APARTMENT 35

2 Bedrooms | Juliet Balcony | 95.1 m²sq | 1023.6 ft²sq

APARTMENT 36

2 Bedrooms | Juliet Balcony | 92.2 m²sq | 992.4 ft²sq

APARTMENT 37

2 Bedrooms | Juliet Balcony | 77.3 m²sq | 832 ft²sq

APARTMENT 28 UPPER FLOOR

2 Bedrooms | Juliet Balcony | Duplex
131.6 m²sq | 1416.5 ft²sq

APARTMENT 29 UPPER FLOOR

2 Bedrooms | Terrace | Juliet Balcony | Duplex
126.3 m²sq | 1359.4 ft²sq

The WOOL HOUSE



youngsRPS 
CHARTERED SURVEYORS & PROPERTY CONSULTANTS

thewoolhouse.co.uk

The Wool House, Gilesgate,
Hexham NE46 3BT

01434 608 980



FLOOR 6



Floor plans: Floor plans are intended to give a general indication of the proposed floor layout only. The dimensions are accurate to within + or - 50mm. Dimensions should not be used for carpet or flooring sizes, appliance spaces or items of furniture. Please ask our sales adviser for details about the treatments specified for individual plots. Drainage, heating and electrical layouts may vary. Dimensions are not intended to form part of any contract or warranty unless specifically incorporated in writing into the contract.

-  Communal areas
-  Utilities

APARTMENT 38

2 Bedrooms | Terrace | 95.3 m²sq | 1025.8 ft²sq

APARTMENT 39

2 Bedrooms | Terrace | 87.3 m²sq | 939.6 ft²sq

APARTMENT 40

2 Bedrooms | Juliet Balcony | 92.9 m²sq | 997.8 ft²sq

APARTMENT 41

2 Bedrooms | Picture Window | 93.3 m²sq | 1004.2 ft²sq

APARTMENT 42

2 Bedrooms | Juliet Balcony | 93.3 m²sq | 1004.2 ft²sq

APARTMENT 43

2 Bedrooms | Juliet Balcony | 92.9 m²sq | 997.8 ft²sq

APARTMENT 44

2 Bedrooms | Juliet Balcony | 77. m²sq | 834.2 ft²sq

APARTMENT 45

2 Bedrooms | 2x Terrace | 112.9 m²sq | 1215.2 ft²sq